

## PTAC Louver

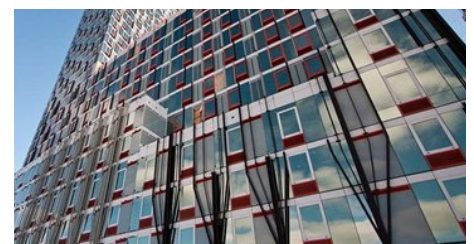
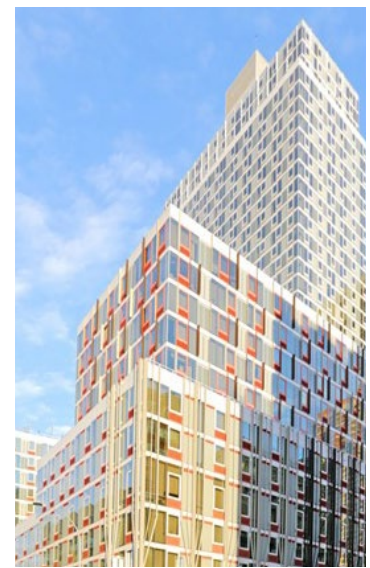
The Air Performance team is experienced in Packaged Terminal Air Conditioner (PTAC) and Vertical Terminal Air Conditioner (VTAC) louver applications. We offer standard and custom sized louvers that can be finished in any color. Air Performance can assist with verifying your louver is the correct configuration for any OEM unit.



Air Performance PTAC louvers are manufactured to successfully attach and provide the correct functionality for each specific OEM brand.

### Automated Paint Facilities and Anodizing

With in-house paint matching available, we can finish your louver products in standard or custom colors. Our 70% PVDF coatings meet 2605 specification. We also maintain a 20-year warranty on our finish and are an approved applicator of many of the superior commercial brand finishes. We also have clear anodizing available.



Contact us at 334-588-0070 or [info@airperformancellc.com](mailto:info@airperformancellc.com).



[airperformancellc.com](http://airperformancellc.com)

159 Genco Dr., Hartford, AL 36344

# PTAC Louver

Whether your specific project and installation requires a window system integration, façade attachment, or simply a standard wall sleeve only attachment, Air Performance has the best frame option available.



PTG-1771



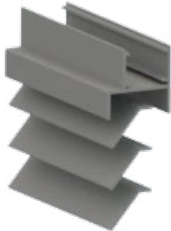
PTG-1772



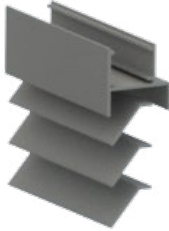
PTG-1971



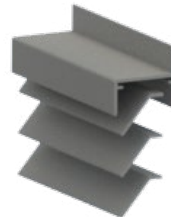
PTG-1972



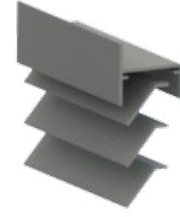
PTG-1981



PTG-1982



PTG-2131



PTG-2132



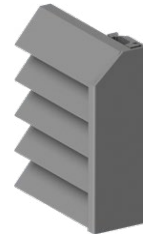
PTG-1371



PTG-1372



Standard/No Frame  
PTG



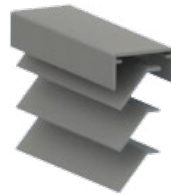
Standard with End Cap  
PTG-142 (end caps only)



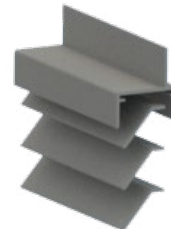
PTG-1491



PTG-1492



PTG-151



PTG-2171



PTG-2172

Custom extrusion development of new frames is available.  
Contact us at 334-588-0070 or [info@airperformancellc.com](mailto:info@airperformancellc.com).



[airperformancellc.com](http://airperformancellc.com)  
159 Genco Dr., Hartford, AL 36344