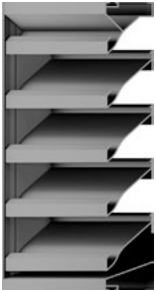


### Fixed Louvers



#### 2DB45-CF AMCA 501 and 511

- 2" Drainable blade stationary louver
- Beginning point of water penetration 894 fpm
- Free area 54%



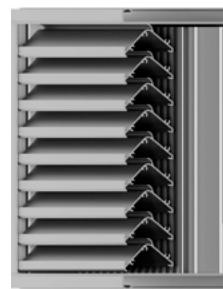
#### WDV-130 AMCA 540 and AMCA 550

- 5" Drainable vertical fixed blade wind-driven rain/hurricane louver
- Miami-Dade County approved and Florida Product Approval (FPA)
- Minimum size 12"W x 12"H
- Maximum size factory assembled 72"W x 120"H
- Design Wind Load: 150 PSF
- Pressure drop .17" w.g.
- Free area 48%



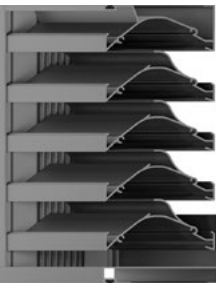
#### 4D375-CF AMCA 501 and 511

- 4" Drainable stationary louver
- Beginning point of water penetration 818 fpm
- Free area 52.31%



#### D-HV-6 AMCA 540 (Basic) and AMCA 550

- 6" Dual-blade, wind-driven rain louver
- Florida Product Approval (FPA)
- Minimum size 12"W x 12"H
- Max. single section 72"W x 72"H
- Free area 40.75%



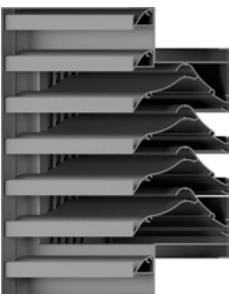
#### 5WDRL-MD AMCA 501 and 511

- 5" Miami-Dade County approved, wind-driven rain resistant louver
- NOA #20-1104.21
- Minimum size 12"W x 12"H
- Maximum single section 84"W x 96"H
- Beginning point of water penetration is above 1250 fpm
- Free area 52%



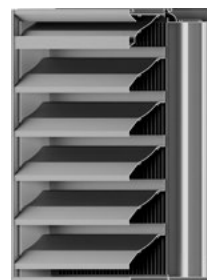
#### 6D375-CF AMCA 511

- 6" Drainable stationary louver with channel frame
- Beginning point of water penetration 962 fpm
- Free area 57.31%



#### 5WDRL-HF

- 5" Stationary wind-driven rain resistant louver
- Designed with a thin line frame for a more continuous look



#### D-HV-9 AMCA 540 and AMCA 550

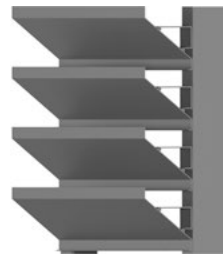
- 9" Horizontal front blades, vertical rear blades hurricane louver
- Miami-Dade County approved and Florida Product Approval (FPA)
- Minimum size 12"W x 12"H
- Max. single section 72"W x 120"H
- Free area 47.06%

# PTAC/VTAC Louvers, Equipment Screens, and Sunshades



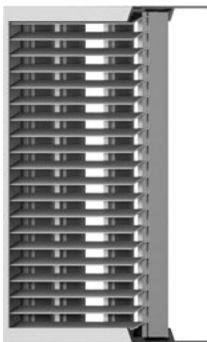
## PTG-MD AMCA 540

- Hurricane-rated louver for PTAC applications
- NOA #23-1017.02
- Florida Product Approval (FPA)
- Minimum size 42.25"W x 16.25"H
- Maximum dimensions of 80"W x 30.25"H



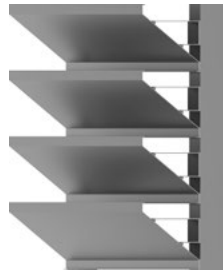
## ES-EL-4

- 4" Deep aluminum equipment screen
- 45° sight proof blades
- Systems are delivered in pre-assembled sections



## VTG-MD AMCA 540

- Hurricane-rated louver for VTAC applications
- NOA #23-1017.02
- Florida Product Approval (FPA)
- Minimum size 20"W x 24"H
- Maximum dimensions of 36"W x 54"H



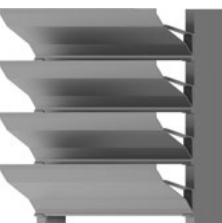
## 6Z45-ES

- 6" Deep aluminum equipment screen
- 45° sight proof blades
- Systems are delivered in pre-assembled sections



## 2JB45-ES

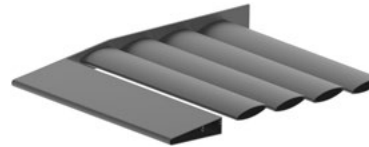
- 2" Deep "J" blade equipment screen
- 45° sight proof blades
- Systems are delivered in pre-assembled sections



## 4Z375-ES

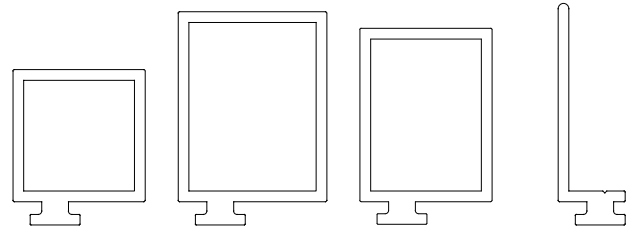
- 4" Equipment screen vision barrier
- Systems are delivered in pre-assembled sections

## Airfoil Sunshade



- 2", 4", 6", 8", 10", 12" Airfoil blade sunshade options available
  - Offer energy savings by significantly lowering solar heat gain and reducing glare in the interior spaces
- Custom outriggers and different blade profile options are also available.

## Flange and Glazing Adapters



Glazing Adapter  
1" x 1"  
AP-119

Glazing Adapter  
1-<sup>1</sup>/<sub>8</sub>" x 1"-<sup>7</sup>/<sub>16</sub>"  
AP-117

Glazing Adapter  
1" x 1"-<sup>5</sup>/<sub>16</sub>"  
AP-076

1.5" Flange Option  
AP-104

In addition to these popular models, customized options are available to meet any curtain wall application.

We are committed to creating value for every customer! Contact us at 334-588-0070 to learn more about our exceptional lead times and visit [airperformancellc.com](http://airperformancellc.com) to view more products.